

Asian Breeze (62)

(亜細亜の風)

A Happy New Year to you all

19 February 2019

Dear Coordinators and Facilitators in Asia/Pacific region.

“A Happy New Year of 2019”. It may sound too late to say it but considering Chinese New Year in 2019 was 5 February (Tuesday), it is still OK. According to the Chinese Zodiac, 2019 represents the Earth Pig symbolizing a compassionate, generous and sympathetic character. You are a “Pig Chinese Zodiac native” if you were born in one of these years: 1935, 1947, 1959, 1971, 1983, 1995, 2007, 2019.

Those born under the Zodiac sign of the Earth Pig enjoy helping others but can often dedicate too much of their time and effort to this cause and rarely ask for help from others in return. According to the Chinese calendar, the Earth Pig values honesty and does what it can to maintain peace with others which, although admirable, is a trait which others can easily take advantage of.

According to the Chinese astrology, 2019 is a great year to make money, and a good year to invest! 2019 is going to be full of joy, a year of friendship and love for all the zodiac signs; an auspicious year because the Pig attracts success in all the spheres of life.



As a last contribution featuring Australia, I have received a wonderful contribution from Ms. Petra Popovac, Airports Coordination Australia (ACA). The contribution features Perth International Airport (PER) and Sydney International Airport (SYD). I hope you will find them interesting.

Perth International Airport (PER)

Perth Airport (IATA: PER, ICAO: YPPH) is a domestic and international airport serving Perth, the capital and largest city of Western Australia. It is the fourth busiest airport in Australia measured by passenger movements and falls within the boundaries of the City of Belmont, City of Kalamunda and the City of Swan.

The airport is located approximately 10km east of the Perth central business district. It is one of two civilian airports within the metropolitan area of Perth, along with the one of Jandakot Airport, 30km and the one of RAAF Base Pearce, and 42 km north east of HMAS Stirling.

Perth Airport and Jandakot Airport recorded a combined total of 362,782 aircraft movements in 2017. If these two metropolitan airports were to be combined into a single airport it would be the busiest airport in Australia measured by aircraft movements.

Since 1997, it has been operated by Perth Airport Pty Limited, a private company (formerly Westralia Airports Corporation Pty Ltd) under a 99-year lease from the Commonwealth Government.

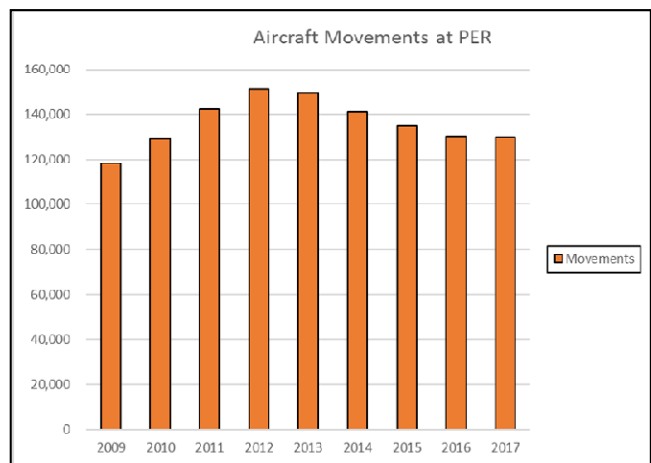
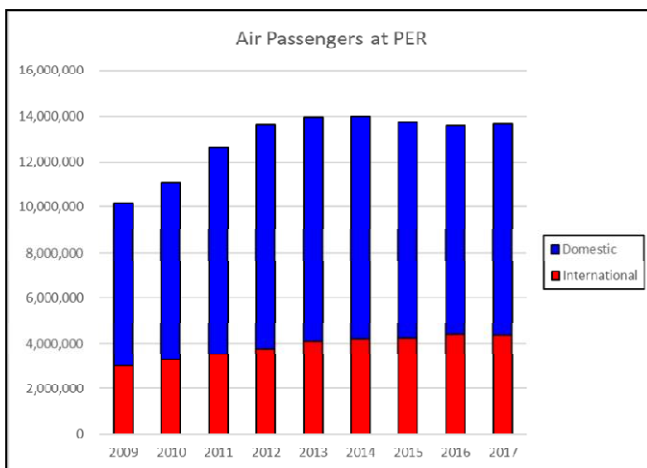
Air Transport Statistics

(1) Air Passengers

FY	2009	2010	2011	2012	2013	2014	2015	2016	2017
International	2,993,874	3,265,581	3,492,160	3,763,658	4,118,239	4,193,740	4,253,127	4,405,171	4,364,573
Domestic	7,168,329	7,832,177	9,140,619	9,900,901	9,843,341	9,790,464	9,506,043	9,216,600	9,327,038
Total	10,162,203	11,097,758	12,632,779	13,664,559	13,961,580	13,984,204	13,759,170	13,621,771	13,691,611

(2) Aircraft Movements

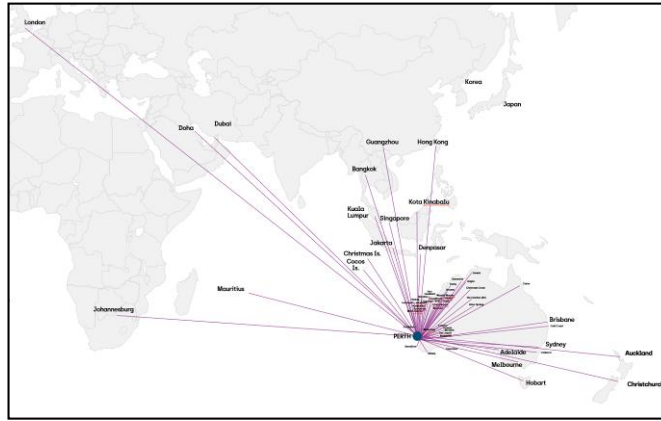
FY	2009	2010	2011	2012	2013	2014	2015	2016	2017
Movements	118,165	129,066	142,079	151,331	149,678	141,256	135,238	130,115	129,931
Total	118,165	129,066	142,079	151,331	149,678	141,256	135,238	130,115	129,931



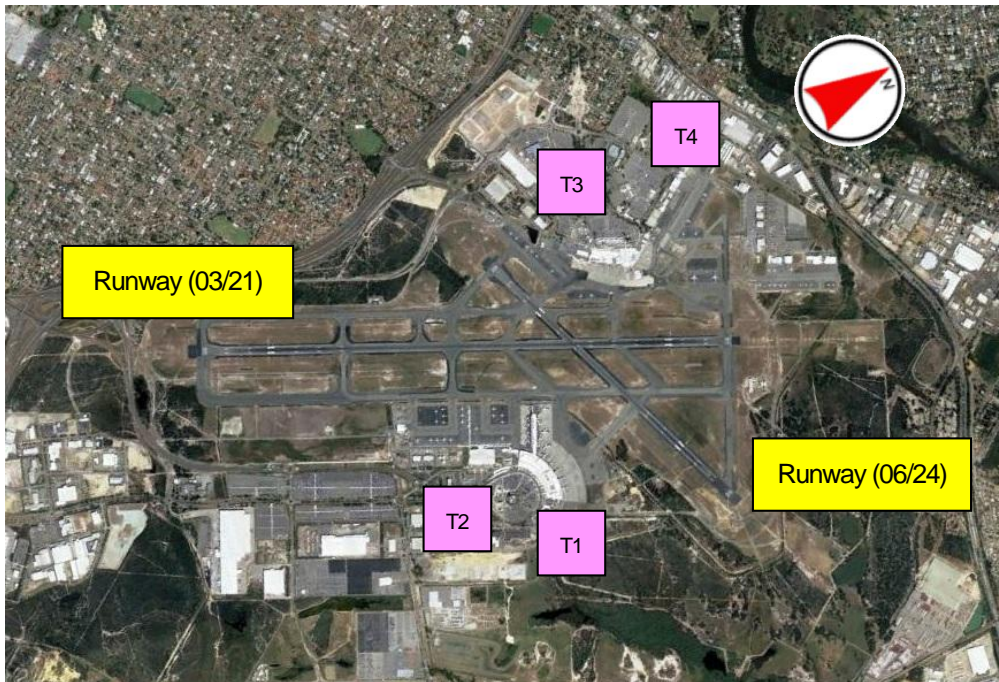
The airport saw strong passenger growth from 2000 to 2012, primarily due to the state's prolonged mining boom and an increase in traffic from international low-cost carrier airlines. By the end of June 2012, Perth Airport experienced passenger growth of 11.7% internationally and 6.9% domestically, resulting in an overall increase of 10.3%. Passenger numbers trebled in the 10 years from 2002 to 2012 with more than 12.6 million people travelling through the airport in 2012. Since 2012, the winding down of the mining boom has seen the demand for both intra- and interstate services contract, with domestic passengers falling from a peak of 9.9 million to 9.5 million by the end of June 2016. The growth in passenger numbers since 2012 has been wholly due to expansion of international services from the city. For the first mining boom in 1979, 679,000 passengers used the airport. This number now travels through the airport every eighteen days.

Air Route

Perth Airport is served by 34 scheduled airlines flying to over 50 destinations in Australia, Oceania, Asia, Africa and Europe. A total of 1,258 scheduled domestic and regional flights arrive and depart from Perth Airport each week. On the international front, a total of 213 scheduled international flights arrive and depart from Perth Airport each week.



Airport Infrastructure



Flights are serviced by two runways; the main (03/21) runway, 3,444m x 45m and cross wind runway (06/24), 2,163m x 45m.

After a 10-month project, a reconstructed cross wind runway was opened on 21 October 2005. The upgrades involved significant strengthening works and enlargement of turning nodes to accommodate regular operations by wide bodied aircraft, including the Airbus A380.

Passenger Terminals

Perth Airport has four main terminals and one minor terminal:
 On the eastern side of the airport (location of the future consolidated terminal precinct), there are two terminals; Terminal 1 (T1) and Terminal 2 (T2).
 On the western side of the airport, there are the domestic terminal buildings, which is divided into two terminals; Terminal 3 (T3) and Terminal 4 (T4).



Terminal 1

Terminal 1 (T1), the international terminal, caters for flights originating or departing outside Australia, with five jetways and a total of eight gates including a Multi Access Ramp System which allows dual boarding of aircraft including the Boeing 777 and Airbus A380. There are four airline lounges: Emirates lounge, Singapore Airlines Silver Kris lounge, the Air New Zealand Lounge and Qantas Captains Club. The Emirates lounge has a second level and offer direct boarding on their flagship Airbus A380 aircraft. In November 2015, a new domestic pier opened at the west end of T1 to service Virgin Australia domestic flights.



Terminal 2

Terminal 2 (T2), is located to the immediate south west of T1. Virgin Australia Regional and Alliance commenced operations from T2 in 2013, and Tiger moved its operations there in 2013. Regional Express Airlines uses T2 for its services to Esperance and Albany.

Terminal 3

Terminal 3 (T3), the domestic terminal, has five jetways and a total of nine gates. Since 23 November 2015, it is currently used by Jetstar, although some Qantas services also operate from the terminal. It was the previous location for Virgin Australia and had a recently expanded member lounge, which utilized the space from the former Ansett Golden Wing Club / Alliance Airlines Lounge.



The Qantas Group has exclusive use of both T3 and T4 since the movement of Virgin Australia to T1. On 24 March 2018 Qantas international departures has moved from the International terminal to terminal 4.

Terminal 4

Terminal 4 (T4), the Qantas terminal, is operated by Qantas Group and is dedicated to the domestic operations of Qantas, QantasLink & their budget subsidiary Jetstar. The terminal has four jetways and a total of nine gates. It has two member lounges: The Qantas Club, which was expanded in March 2013 to cater for an additional 140 passengers and the Qantas Domestic Business Lounge, which opened in 2014. In 2018 Qantas opened a new international area in T4 as it had started flights from Perth to London. The Perth Airport Master Plan outlines

these terminals will ultimately be demolished and replaced by new domestic facilities east of T1.

GA Terminal

A northern general aviation terminal, used primarily by charter aircraft, mainly for mining companies as fly-in fly-out services to remote operations.



Sydney International Airport (SYD)

Sydney (Kingsford Smith) Airport (colloquially Mascot Airport, Kingsford Smith Airport, or Sydney Airport); (IATA: SYD, ICAO: YSSY) is an international airport in Sydney, Australia located 8km south of Sydney city center, in the suburb of Mascot. The airport is owned by the ASX-listed Sydney Airport Group.

It is the primary airport serving Sydney, and is a primary hub for Qantas, as well as a secondary hub for Virgin Australia and Jetstar Airways. Situated next to Botany Bay, the airport has three runways, colloquially known as the east-west, north-south and third runways.

Sydney Airport is one of the world's longest continuously operated commercial airports and the busiest airport in Australia, handling 42.6 million passengers and 348,904 aircraft movements in 2016-17. It was the 38th busiest airport in the world in 2016. Currently 46 domestic and 43 international destinations are served to Sydney directly.

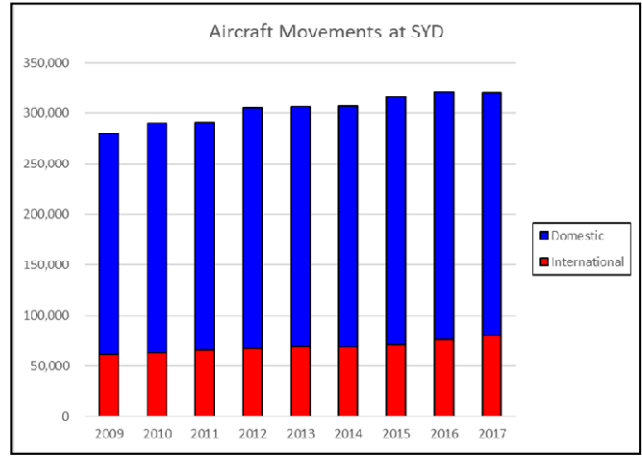
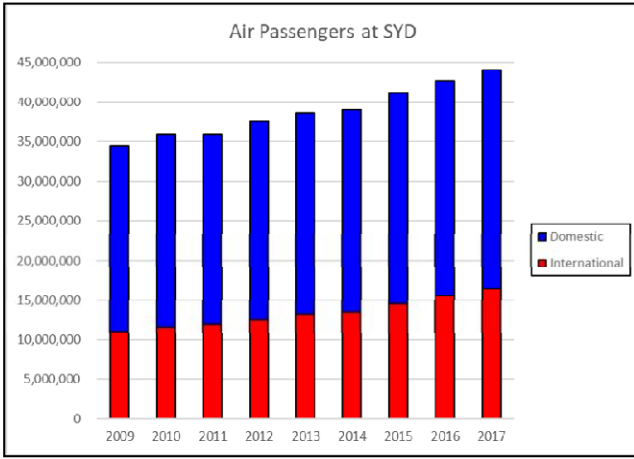
Air Transport Statistics

(1) Air Passengers

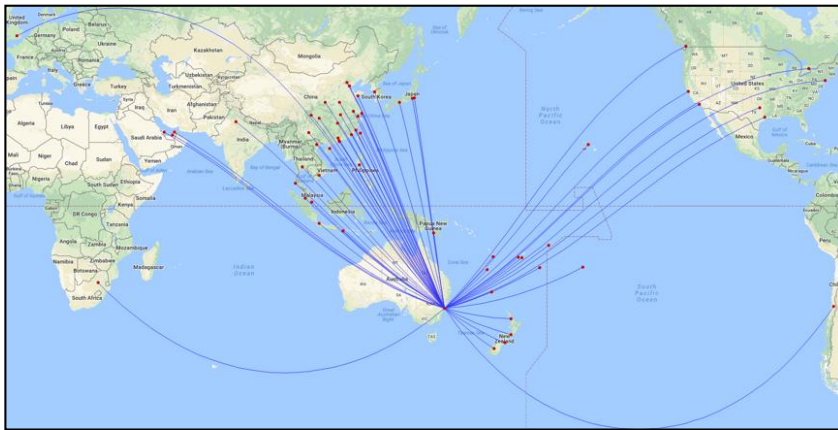
FY	2009	2010	2011	2012	2013	2014	2015	2016	2017
International	11,110,495	11,644,313	12,017,305	12,617,552	13,238,439	13,508,656	14,542,194	15,559,762	16,431,177
Domestic	23,350,908	24,313,976	23,969,494	24,984,953	25,390,865	25,513,348	26,563,235	27,054,460	27,604,152
Total	34,461,403	35,958,289	35,986,799	37,602,505	38,629,304	39,022,004	41,105,429	42,614,222	44,035,329

(2) Aircraft Movements

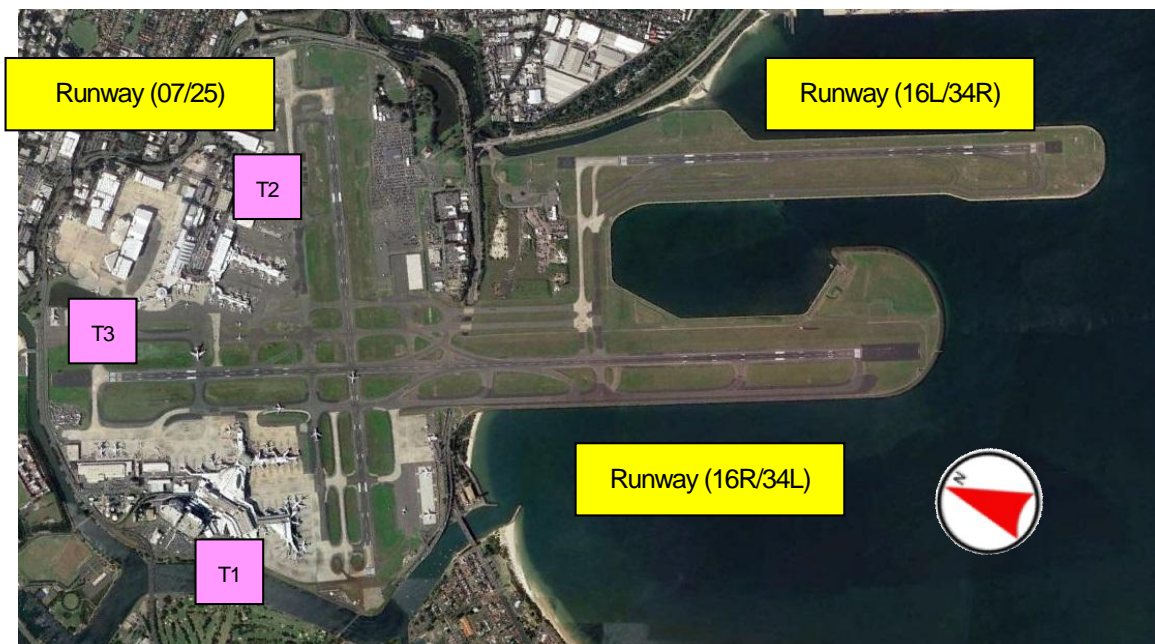
FY	2009	2010	2011	2012	2013	2014	2015	2016	2017
International	61,683	63,433	65,958	67,820	69,884	68,705	71,259	75,958	79,678
Domestic	217,673	227,068	225,352	237,186	236,820	238,080	245,207	244,766	240,625
Total	279,356	290,501	291,310	305,006	306,704	306,785	316,466	320,724	320,303



Air Route Map



Airport Infrastructure



There are three runways at SYD. The main runway is (16R/34L) running north and south with 3,962m and the parallel runway of (16L/34R) with 2,438m. The cross wind runway of (07/25) is running east and west with 2,530m.

The "third runway (16L/34R) ", which the Commonwealth government commenced the development in 1989 and completed in 1994, remained controversial because of increased aircraft movements, especially over many inner suburbs. In 1995 the Common Cause - No Aircraft Noise party (also known as the No Aircraft Noise Party) was formed to contest the state seat of Marrickville. The results of the election that year show that the party did not win a seat in parliament, but came close. The party does not appear to have entered candidates for any subsequent election.

In 1995, the Australian Parliament passed the Sydney Airport Curfew Act 1995, which limits the operating hours of the airport. This was done in an effort to curb complaints about aircraft noise. The curfew prevents aircraft from taking off or landing between the hours of 23:00 and 06:00. A limited number of scheduled and approved take-offs and landings are permitted respectively in the "shoulder periods" of 23:00 to midnight and 05:00 to 06:00. The Act does not stop all aircraft movements overnight, but limits movements by restricting the types of aircraft that can operate, the runways they can use and the number of flights allowed. During extreme weather, flights are often delayed and it is often the case that people on late flights are unable to travel on a given day. As of 2009, fines for violating curfew have been levied against four airlines, with a maximum fine of \$550,000 applicable.

In addition to the curfew, Sydney Airport also has a cap of 80 aircraft movements per hour which cannot be exceeded.

Passenger Terminals

Sydney Airport has three passenger terminals. The International Terminal is separated from the other two by a runway; therefore, connecting passengers need to allow for longer transfer times.

Terminal 1

Terminal 1 was opened on 3 May 1970, replacing the old Overseas Passenger Terminal (which was located where Terminal 3 stands now) and has been greatly expanded since then. Today it is known as the International Terminal, located in the airport's north western sector. It has 25 gates (thirteen in concourse B numbered 8-37, and twelve in concourse C numbered 50-63) served by aerobridges. Pier B is used by Qantas, all Oneworld members and all Skyteam members (except Delta). Pier C is used by Virgin



Australia and its partners (including Delta) as well as all Star Alliance members. There are also a number of remote bays which are heavily utilized during peak periods and for parking of idle aircraft during the day.

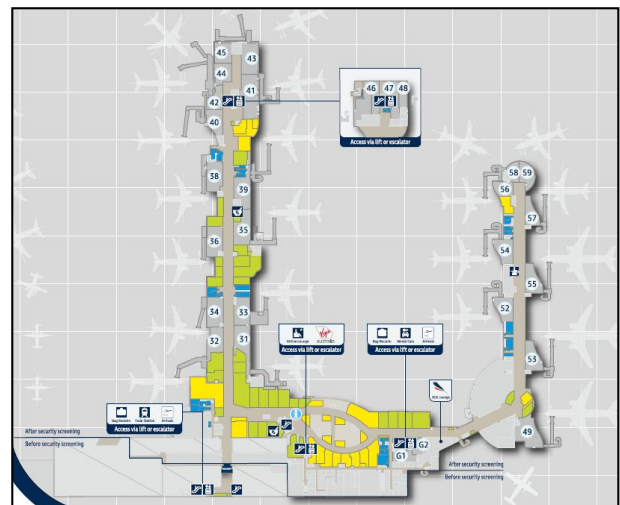
The terminal building is split into three levels, one each for arrivals, departures and airline offices. The departure level has 20 rows of check-in desks each with 10 single desks making a total of 200 check-in desks. The terminal hosts eight airline lounges: two for Qantas, and one each for Etihad Airways, Air New Zealand, Singapore Airlines, Emirates, American Express and SkyTeam. The terminal underwent a major \$500 million redevelopment that was completed in 2010, by which the shopping complex was expanded, outbound customs operations were centralized and the floor space of the terminal increased to 254,000m.



Further renovations began in 2015 with a reconfiguration and decluttering of outbound and inbound duty-free areas, extension of the airside dining areas and installation of Australian Border Force outbound immigration SmartGates. These works were completed in 2016.

Terminal 2

Terminal 2, located in the airport's north-eastern section, was the former home of Ansett Australia's domestic operations. It features 16 parking bays served by aerobridges and several remote bays for regional aircraft. It serves FlyPelican, Jetstar, Regional Express Airlines, Tigerair Australia, Virgin Australia and Virgin Australia Regional Airlines. There are lounges for Regional Express Airlines and Virgin Australia.



Terminal 3

Terminal 3 is a domestic terminal, serving Qantas with QantasLink flights having moved their operations from Terminal 2 to Terminal 3 on 16 August 2013. Originally, it was home for Trans Australia Airlines (later named Australian Airlines). Like Terminal 2 it is located in the north-eastern section.

The current terminal building is largely the result of



extensions designed by Hassell that were completed in 1999. This included construction of a 60m roof span above a new column-free check-in hall and resulted in extending the terminal footprint to 80,000m. There are 14 parking bays served by aerobridges, including two served by dual aerobridges. Terminal 3 features a large Qantas Club lounge, along with a dedicated Business Class and Chairmans lounge. Terminal 3 also has a 'Heritage Collection' located adjacent to gate 13, dedicated to Qantas and including many collections from the airline's 90-plus years of service. It also has a view of the airport's apron and is used commonly by plane-spotters. Qantas sold its lease of Terminal 3, which was due to continue until 2019, back to Sydney Airport for \$535 million. This means Sydney Airport resumes operational responsibility of the terminal, including the lucrative retail areas.

OtherTerminal

Sydney Airport had a fourth passenger terminal, east of Terminal 2. This was formerly known as Domestic Express and was used by Regional Express Airlines, and low-cost carriers Virgin Blue (now known as Virgin Australia) and the now-defunct Impulse Airlines, during the time Terminal 2 was closed following the collapse of Ansett Australia. It is now used by DHL Express and Tasman Cargo Airlines as an office building.

From Chief Editor

I would like to express my sincere appreciation again to Ms. Petra Popovac for her excellent contribution to Asian Breeze. I learnt a lot from this article. The aircraft movements and passengers at Sydney International Airport are between Narita Airport and Haneda Airport in Japan. The night curfew is exactly the same as Narita Airport from 23:00 to 06:00. What a noise constrained airport!

The 70th (2019) Sapporo Snow Festival, one of Japan's largest winter events, was held from 4 to 11 February in Hokkaido. It attracts a growing number of visitors from Japan and abroad every year. Every winter, about two million people come to Sapporo to see a large number of splendid snow and ice sculptures lining Odori Park, the grounds at Community Dome Tsudome, and along the main street in Susukino. During a festival, Sapporo is turned into a winter dreamland of crystal-like ice and white snow. The 71st (2020) Sapporo Snow Festival will be held from 4 to 11 February 2020. For those who want to visit it next year, please plan a head. (H.T.)

